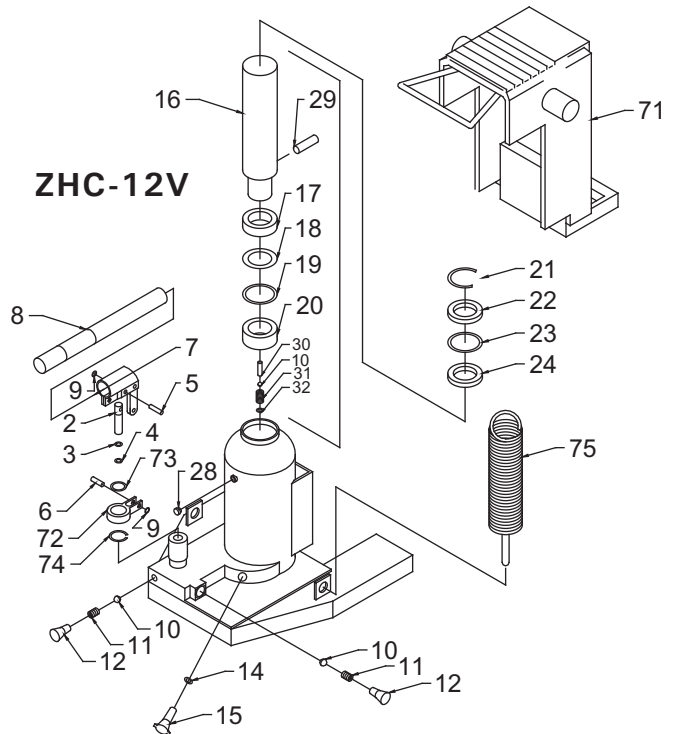
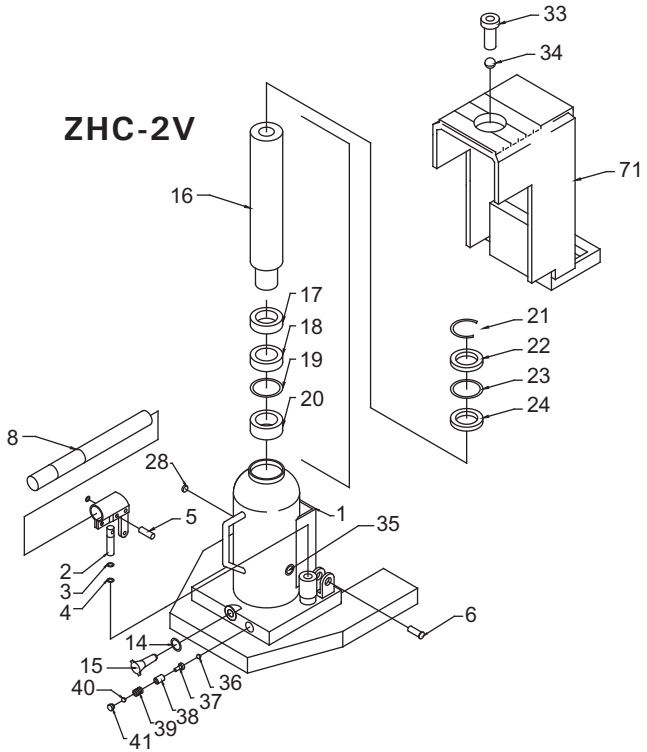
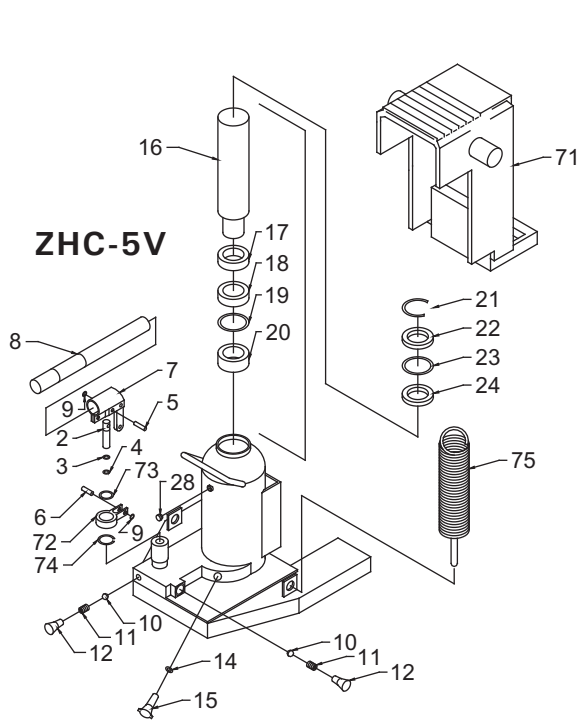




ZHC Series Parts Breakdown

Toll Free: 1-800-579-8088 Web: www.zinko.com

REV 092507



- | | |
|------------------------|------------------------------|
| 1) BODY ASSY | 23) *CYLINDER PACKING |
| 2) PUMP PLUNGER | 24) STOPPER RING |
| 3) *PUMP BACKUP RING | 28) *OIL PLUG |
| 4) *PUMP PACKING | 29) HORIZONTAL PIN |
| 5) *PUMP PLUNGER PIN | 30) VERTICAL PIN |
| 6) *PUMP STAY PIN | 31) RAM SPRING |
| 7) HANDLE SOCKET ASSY | 32) R. S. STOPPER RING |
| 8) HANDLE | 34) *SAFETY VALVE BALL |
| 9) *SNAP RING/PUSH NUT | 35) *S. V. BALL SEAT |
| 10) *VALVE BALL | 36) *SAFETY VALVE SPRING |
| 11) *VALVE SPRING | 37) *ADJ. SCREW SAFETY VALVE |
| 12) *VALVE PLUG | 38) *SAFETY VALVE PLUG |
| 14) *RELEASE PACKING | 39) *PUSH NUT |
| 15) *RELEASE ASSY | 71) HANGER |
| 16) RAM | 72) *PUMP BASE |
| 17) RAM PACKING SEAT | 73) *PUMP STOPPER A |
| 18) RAM BACKUP RING | 74) *PUMP STOPPER B |
| 19) RAM PACKING | 75) *RETURN SPRING |
| 20) RAM GUIDE RING | 76) REPAIR KITS |
| 21) SNAP RING | 77) RAM ASSY |
| 22) STUFFING RING | 78) RELEASE ASSY |
- * Same parts for 5V & 10V.